

adani

Growth  
With  
Goodness

# Adani Airports Business Presentation

13<sup>th</sup> April 2023



# Section-I : Adani Airports Overview

adani

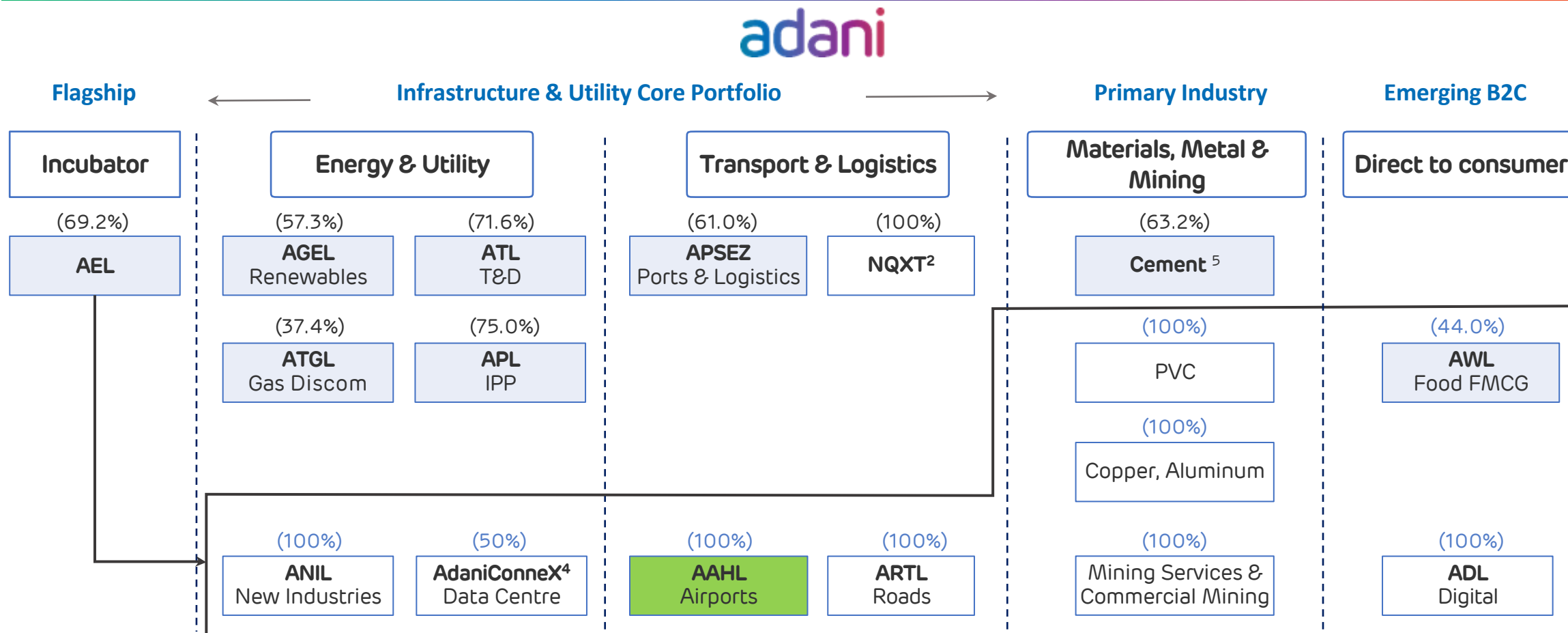


# Table of Content

---

1	Industry Overview
2	AAHL : India's Largest Airport Platform
3	Airport Business Overview
4	Airport Business Strategy
5	MIAL & NMIAL : Twin Airport Ecosystem

# Adani Airports : Part of Transport & Logistics Portfolio of Adani group



(%): Promoter equity stake in Adani Portfolio companies ( ): AEL equity stake in its subsidiaries

**A multi-decade story of high growth centered around infrastructure & utility core**

1. B2C: Business to Customer | 2. NQXT: North Queensland Export Terminal | 3. ATGL: Adani Total Gas Ltd, JV with Total Energies | 4. Data center, JV with EdgeConnex, AEL: Adani Enterprises Limited; APSEZ: Adani Ports and Special Economic Zone Limited; ATL: Adani Transmission Limited; T&D: Transmission & Distribution; APL: Adani Power Limited; AGEL: Adani Green Energy Limited; AAHL: Adani Airport Holdings Limited; ARTL: Adani Roads Transport Limited; ANIL: Adani New Industries Limited; AWL: Adani Wilmar Limited; ADL: Adani Digital Limited; IPP: Independent Power Producer 5. Cement business includes 63.15% stake in Ambuja Cement which in turn owns 50.05% in ACC Limited. Adani directly owns 6.64% stake in ACC Limited

# Indian Aviation Industry

## Airports in India

### Total Airports : 153

- PPP Airports : 14
- Govt : 139
- Domestic : 111
- International : 42

### Air Travel Penetration: (Seat per capita)

Domestic : 0.12  
International : 0.06

### Indian Airline Fleet:

Current : ~ 700 Aircrafts  
Order Book: ~ 700 Aircrafts

[FY 2024 Net Additions approx. 130]

## Privatization

- Recently, Govt. privatized 6 Tier II Airports in FY 2019-2020. (Adani Airports won all 6 Airports)
- Govt. has identified New 25 Airports to be privatized in near future.
- Govt. of India announced to sale residual stake in the JV Airports.

## Non-Aero Potential

### Non-Aero Revenue (NAR) Share: (% of Total Revenue)

- AAI Airports : ~15%
- Private Airports : ~ 40%

Airports like Delhi & Mumbai has 55% - 60% as Non-Aero Revenue.

Global Developed Airports : ~ 60%

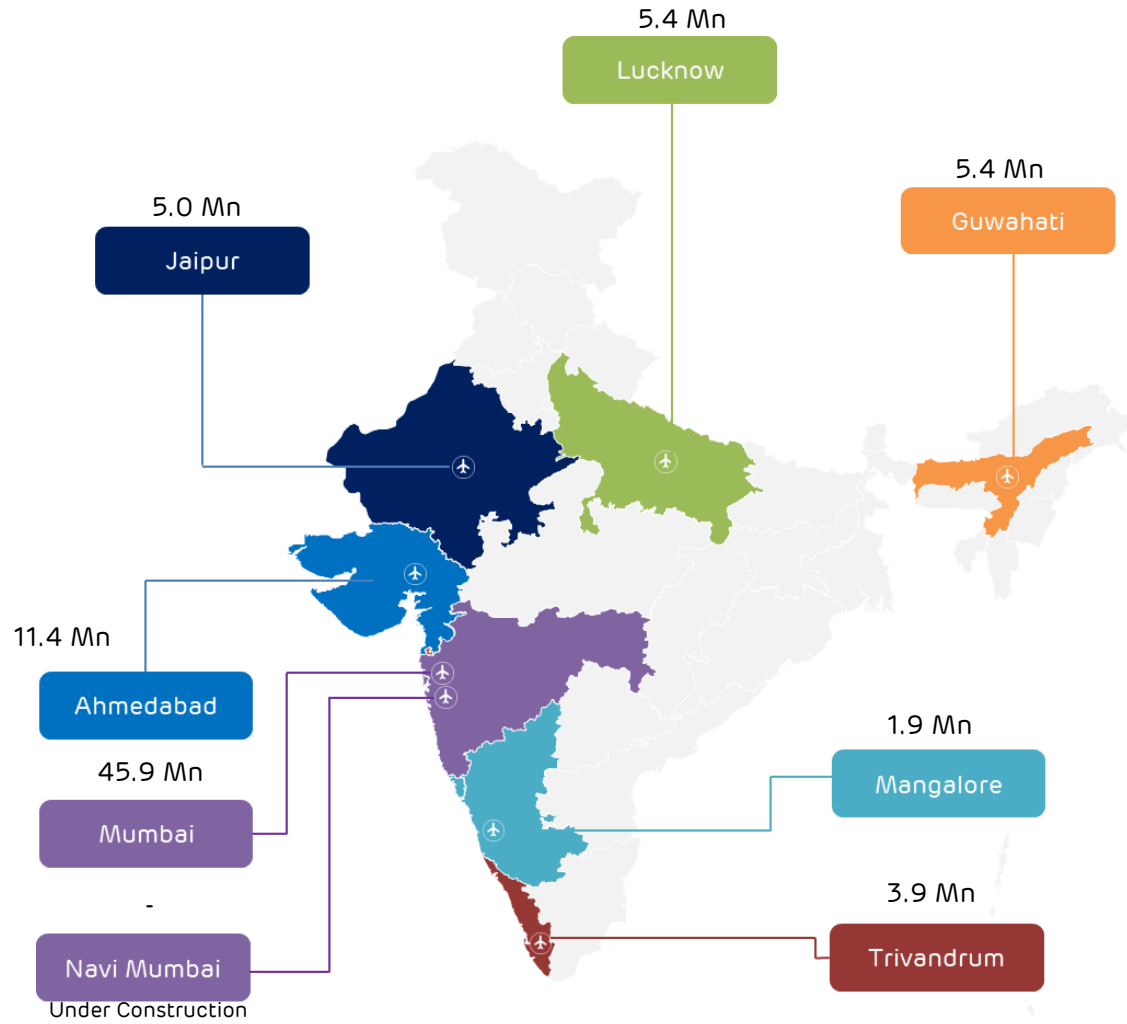
City Side Development (CSD): True CSD Potential yet to unleash.

[Adani Airports : ~657 Acre land for CSD]

## Factors Driving Indian Aviation:

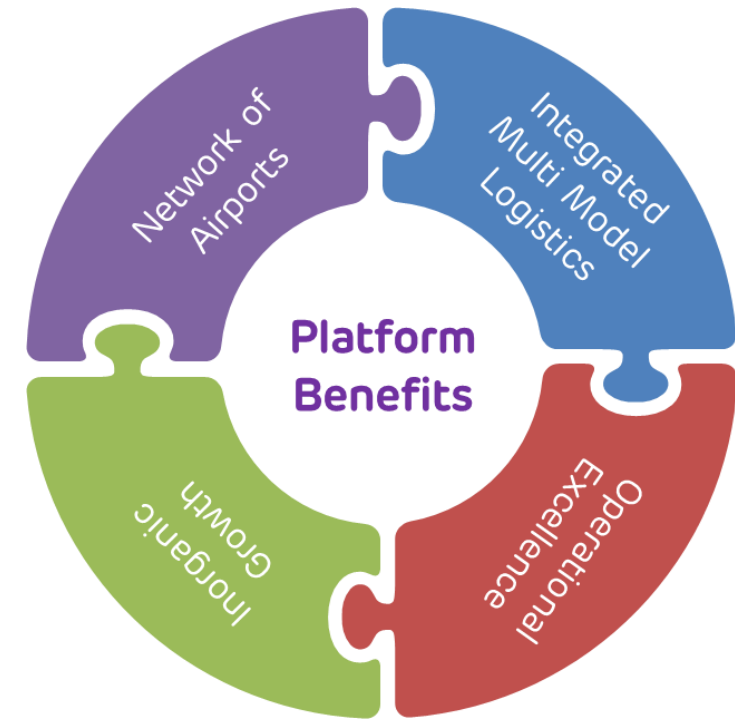
- Rising Middle Class & Urbanization in India.
- Connectivity beyond Tier I and II Cities through UDAN-RCS Scheme.
- India is one of the fastest growing aviation market in the world. (Currently **3<sup>rd</sup> largest** in the world)
- 100% FDI in Greenfield Airports Projects.
- Privatization of Air India and Open Service ASAs.

# AAHL : India's Largest Private Airport Platform



Total 8 Airports under fold, 7 Airports are Brownfield and Navi Mumbai is Greenfield.

- Airports Spread in States contributing to ~45% of India's GDP
- Unique Combination of Regional & International Gateways.
- AAHL as an Airport Platform :



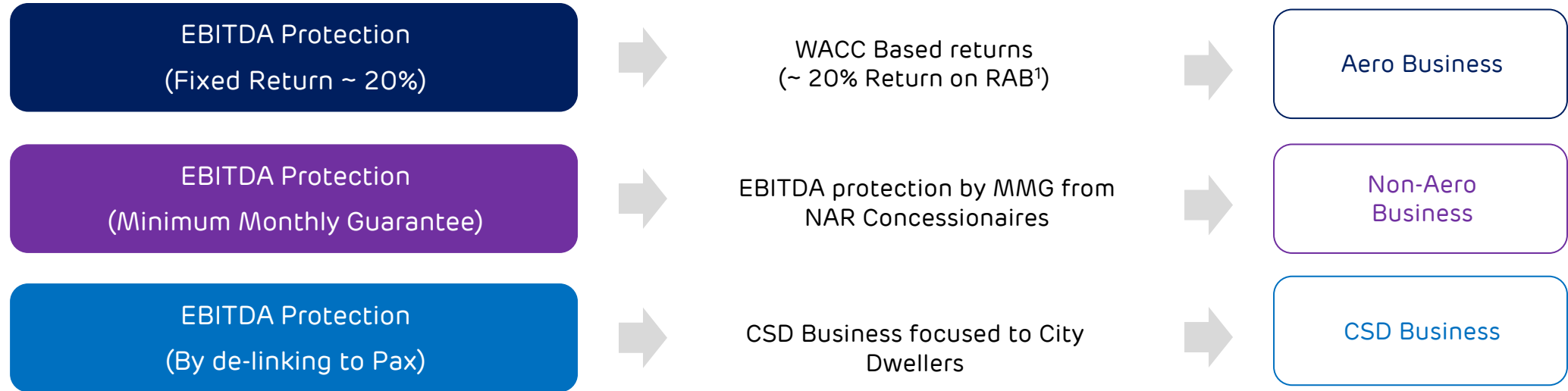
Serving 300 Mn + Consumer Base

Unique Combination of Infra Play & Consumer Play

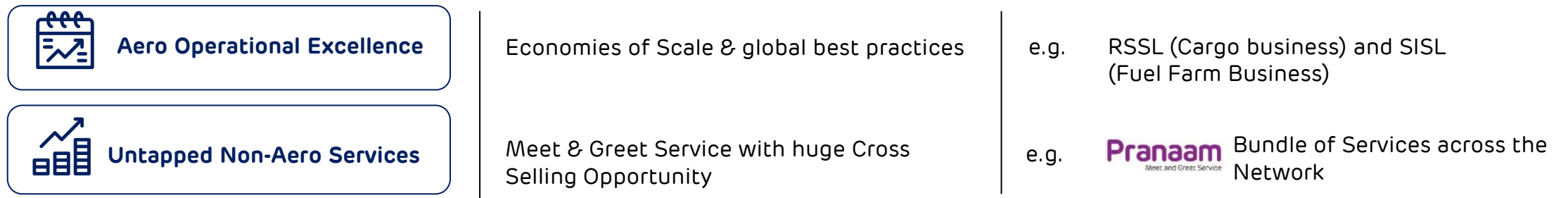


# Revenue Structure at Airport

## Traditional Business Model:



## Additional Upside:



<sup>1</sup>. Return on RAB and Average Depreciation.

# Airport Business as a Combination of Infra Play and Consumer Play



Infra Play



Consumer Play



Startup Ecosystem

World Class Airport Construction

Tech Enabled Airports

Aero Business

Non-Aero Business

City Side Development

Construction of New Age Megastructures

Digitization of Activities

WACC based returns

Consumer Excellence

Creation of Destination Magnets



Inhouse PMO & Operations

Startup Mindset

Utility Business

F&B, Retail, Lounge, Advertisement etc.

Building & Operating Hotels & Conventions, Theme parks, Shopping Malls etc. for City Dwellers





## Capacity Creation

- De-bottlenecking and **capacity expansion**.
- Focus on **smart planning** of airside and terminal
- Leveraging Adani Group's **execution excellence**



## Asset Utilization & Route Development

- Shifting of Peak Hour by "**Head & Shoulder Strategy**"
- Tech enabled Operations
- **Premiumization** of Route Mix
- Leveraging Platform network strength



## Consumer Experience

- Sharp focus on ensuring highest **operating metrics**
- Tech enabled maintenance to ensure maximum uptime
- Creating transparency amongst customers

### Adjacent Aero Services/Businesses:



#### Air Cargo

- Focus on AFS, E-Commerce and Supply Chain Management
- Integrated IT Solutions & CRDC



#### Fuel farm

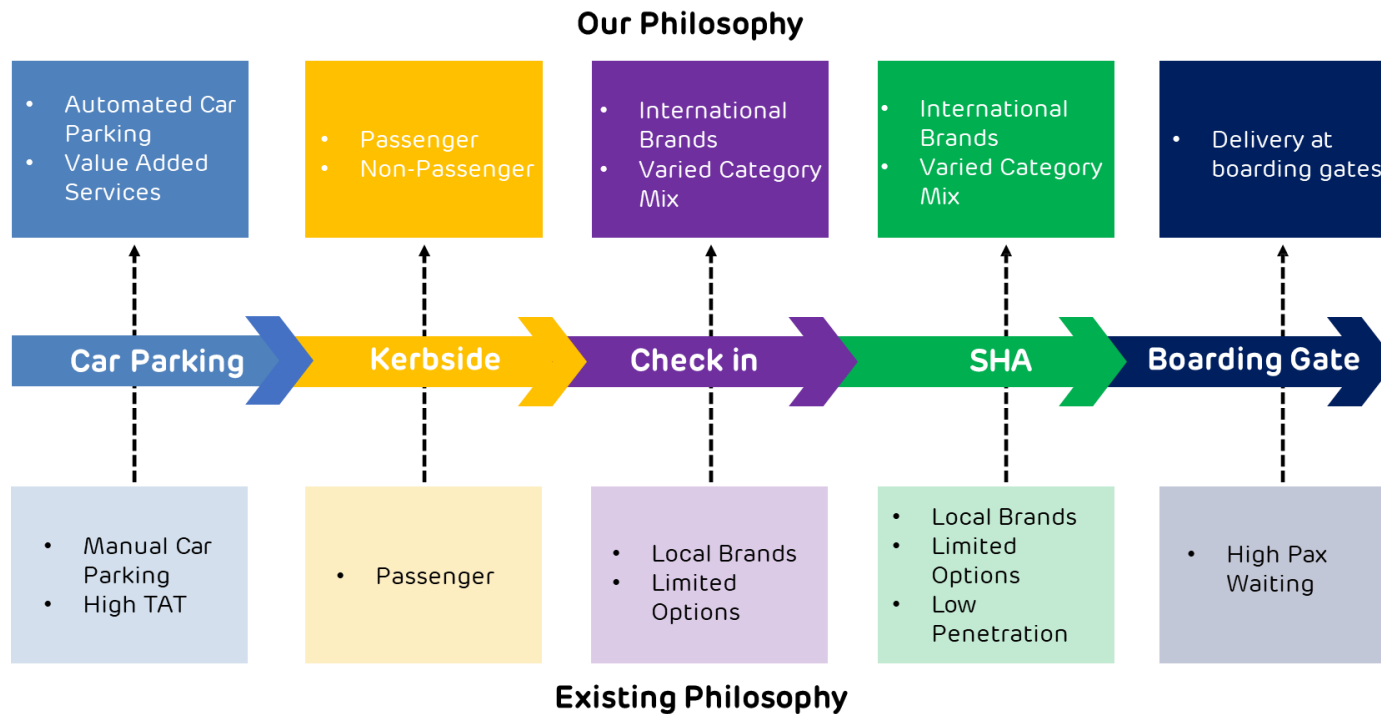
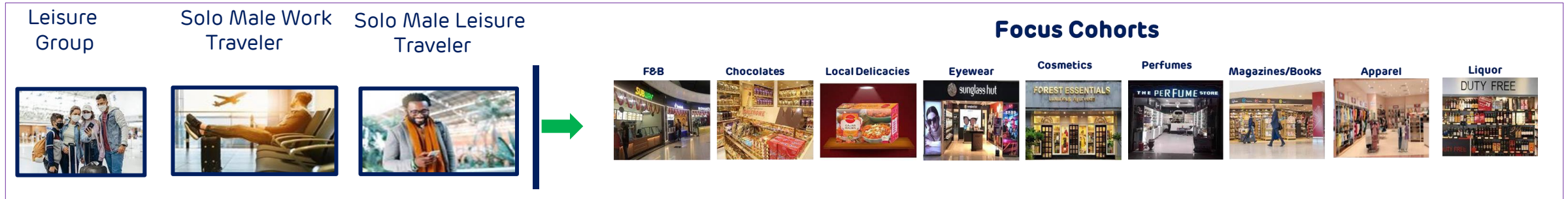
- Open Access Facility across the Network
- Implementation of Hydrant Refueling System across the network



#### Ground Handling

- Adani Airports to manage Ground Handling by FY 2026 (across network)
- Long Term – Offering Services globally.

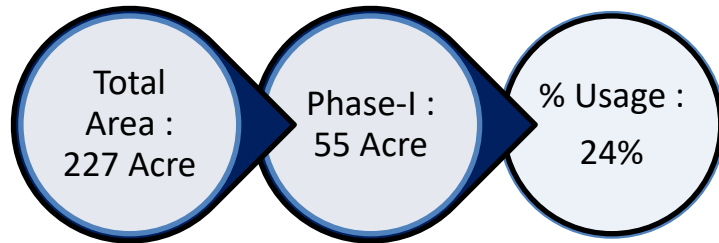
# Non-Aero Business Strategy



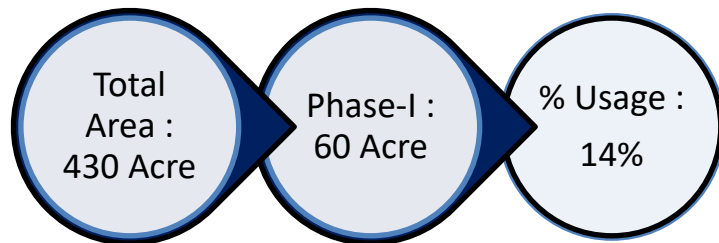
## Non-Aero Growth Levers:

- New Area Monetization
- Internalization of High Margin Businesses
- Digital Channel
- Unique Brand & Category Mix
- Marketing Initiatives
- Focus on Non-Pax Consumers

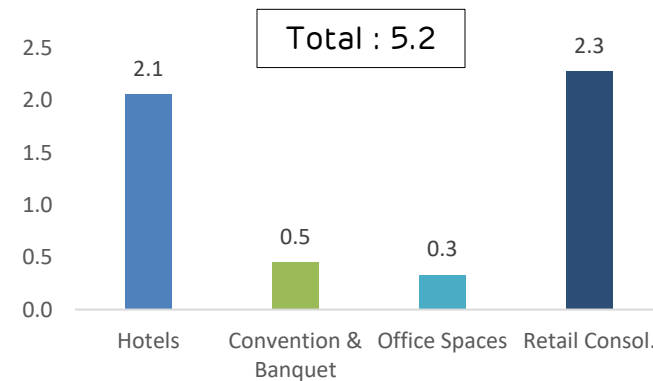
## A. Six Airports



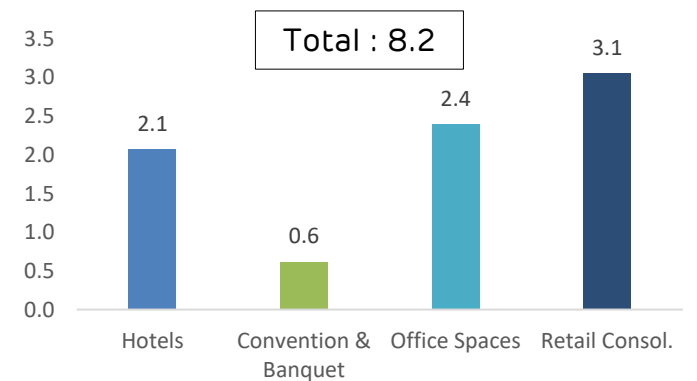
## B. MIAL & NMIAL



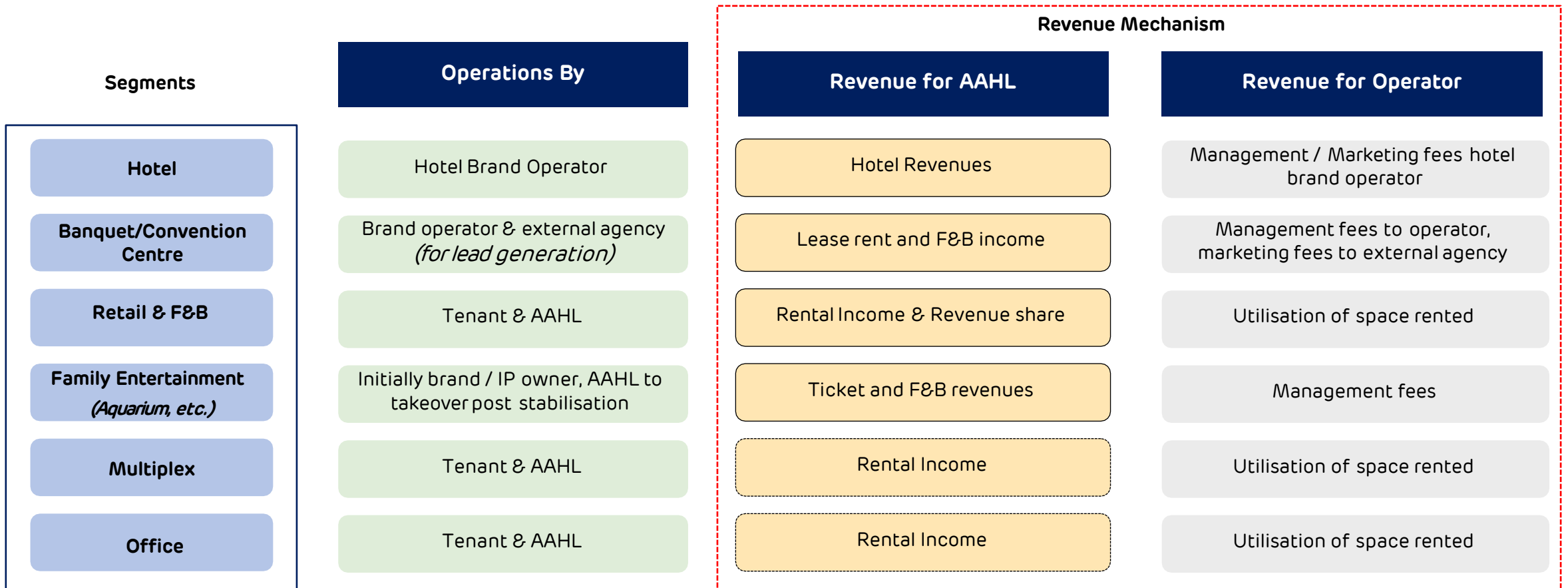
Mn Sq. Ft



Six Airports



MIAL & NMIAL



# Adani Airports : Digital Strategy through Adani One App



**Greater Convenience**



**Planned Travel** eliminating apprehensions leading to more **Engagement at Airport**



**USPs/Offer**s for each L.O.B



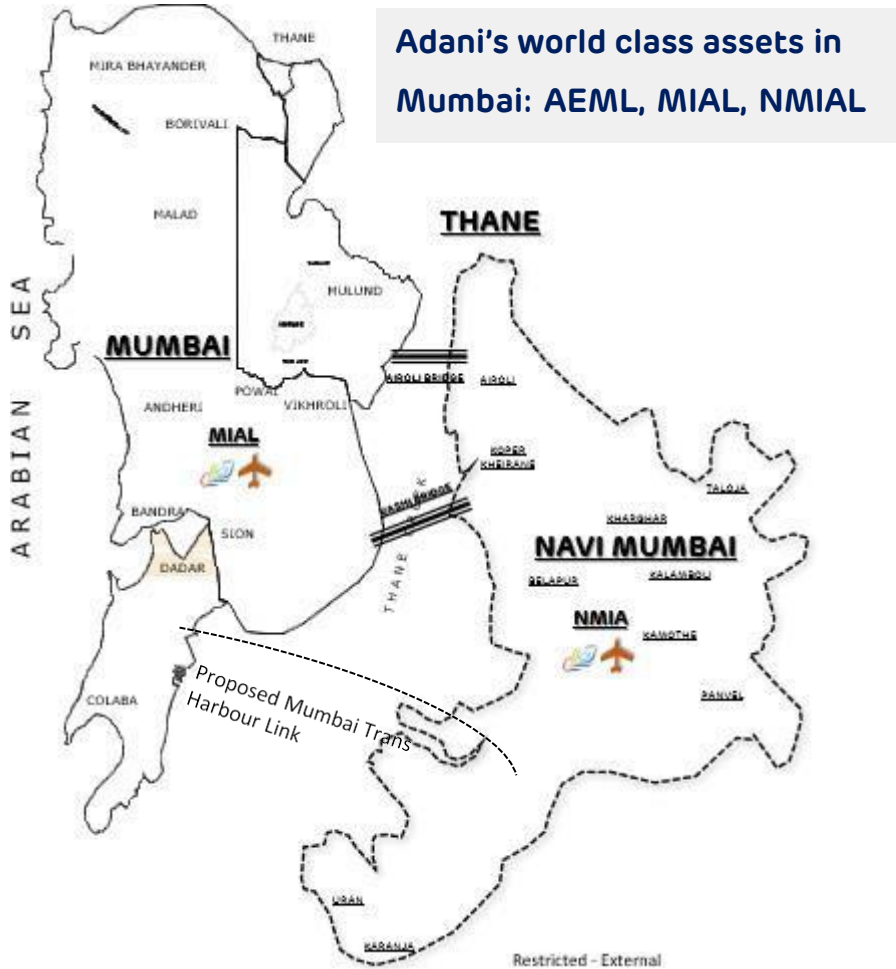
## Section-II : Navi Mumbai Airport

adani





## Mumbai : India's Commercial Capital



Adani's world class assets in Mumbai: AEML, MIAL, NMIAL

## India's Largest City

- ✈ 20.4mn population;
- ✈ 4<sup>th</sup> most populous city in the world
- ✈ World' Largest Metropolis by 2050
- ✈ World' biggest urban agglomeration

## Proximity to strategic Infrastructure projects

- ✈ Delhi Mumbai Industrial Corridor
- ✈ Western Dedicated Freight Corridor
- ✈ Mumbai Pune Express Way
- ✈ Nhava Sheva, Jawaharlal Nehru Port (India's 2<sup>nd</sup> largest container port)

## India's Commercial & Financial Capital

- ✈ 8%+ of India's real GDP (Equivalent to Quarter of Spain, Half of Sweden and equal to Chile and Finland)
- ✈ 24<sup>th</sup> Richest City in world based on GDP
- ✈ 2.2x Per Capita Income of India
- ✈ >1/3<sup>rd</sup> Of Indian Foreign Trade

## India's Entertainment Capital

- ✈ US\$ 2.3bn Bollywood Industry
- ✈ 1,600+ films per year; Largest film Industry in world
- ✈ 2.6bn+ tickets sold worldwide every year

## Strategic Location Driving Sustainable Advantage

# NMIAL: Driving Force for New Airport

## Mumbai Airport Capacity

Capacity Constraint due to....

**Mumbai : City Center Airport in congested area of Mumbai**

↓

No Further Scope of Capacity Enhancement beyond 60 million Pax/Year

**Single Runway Airport:**

↓

2 Runways but crossing each other, hence 1 runway can be used at a time

**Growing Pax Footfalls**

↓

FY	Pax (Mn)
FY 16	41.7
FY 17	45.2
FY 18	48.5
FY 19	48.8
FY 20	45.9

**Effectively No New Slots Available for Airlines**

## MMR traffic

Further, MMR traffic potential necessitates a new Airport for India's Commercial Capital..



## Idea of New Airport

Navi Mumbai Airport....

90 Mn Pax Capacity  
(Phase I : 20 Mn)

Cargo : 2.5 MMT  
(Phase I : 0.80 MMT)

Runway(Nos) : 2  
(Phase I : 1)

Terminal(Nos): 4  
(Phase I : 1)

Phase-I  
Commercial  
Operation Date  
:Dec 2024

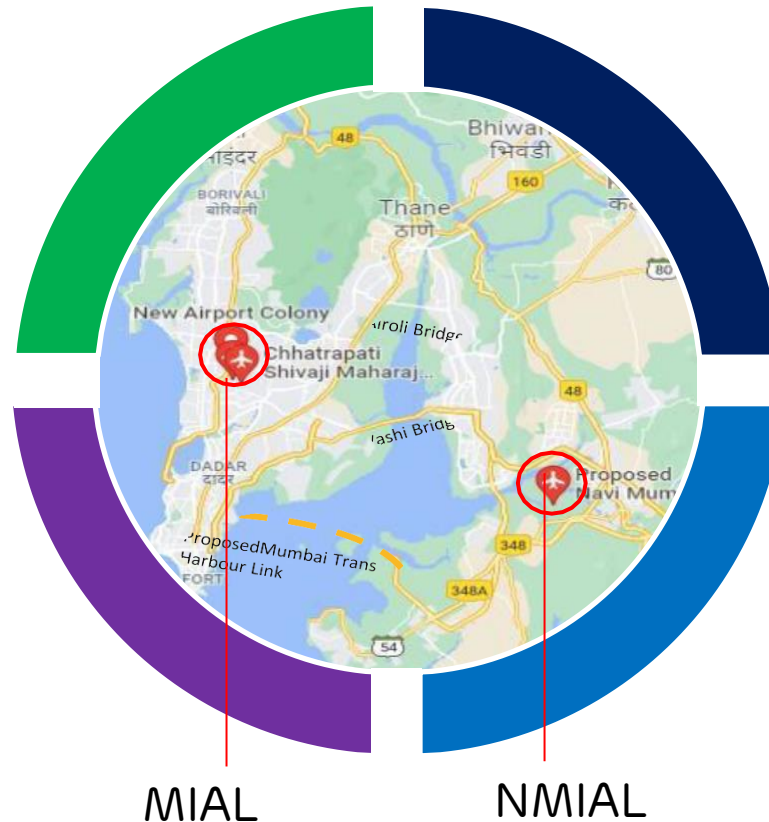
## Optimizing Airline Flow

- Currently, Mumbai has 2 major airlines with domestic as well as international operations : 1) Indigo and 2) Air India.
- One Airline can be optimized to NMIAL which will release gridlock at MIAL.
- The airline will have benefit of prime slots at NMIAL.
- Efficient and economical for airline, since shifting of only spillover will result into extra initial set up cost to the airline.

## Decongestion of Mumbai Airport

- Initially ATRs will be shifted to NMIAL (since Mumbai Airport is already saturated and ATRs generally eats up the runway capacity)
- Then, Shifting of one block of airline to NMIAL will also help to decongest MIAL and released capacity at MIAL will be utilized for creation of transit hub at MIAL.

## Twin Airport System



## Hub & Spoke Strategy

- Beginning the operations by NMIAL, both airports will have 2 runways combined with 3 terminals.
- Further, the enhanced capacity at airports will also help to airlines to create hub and spoke model.
- **Hub and spoke model** : International traffic is supplemented by demand of extended catchment area and hence MIAL and NMIAL will act as hub and other airports including platform airports will be spoke.

## Onboarding Alliance Airlines

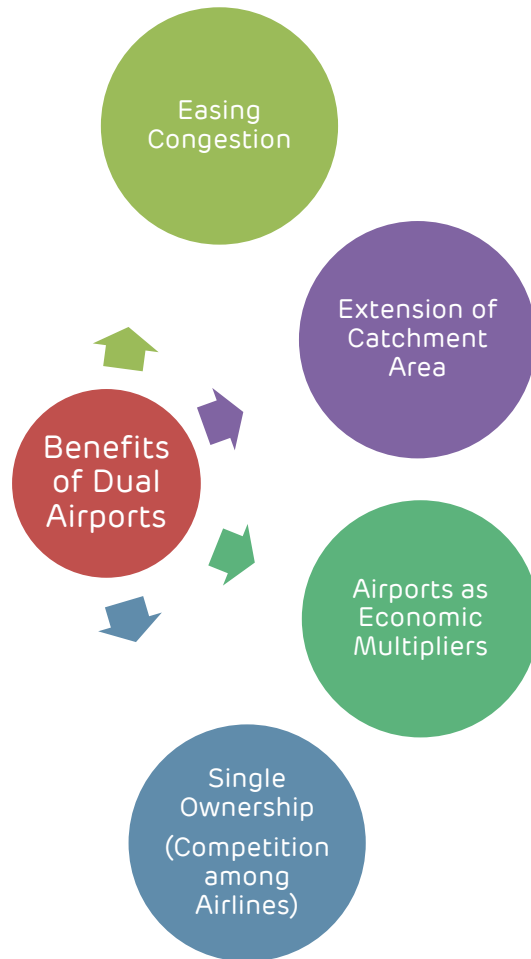
Currently MIAL being commercial hub of the country, only has 19% share in international seats.

As a part of route development strategy:

- Targeting airlines with higher imbalances (e.g UAE)
- Airlines with alliances<sup>1</sup> will be given priority.
- Route Development (mix of long and short haul)

**Both Airport under common control to bring synergy to Ecosystem**

<sup>1</sup> Star alliance, one world etc

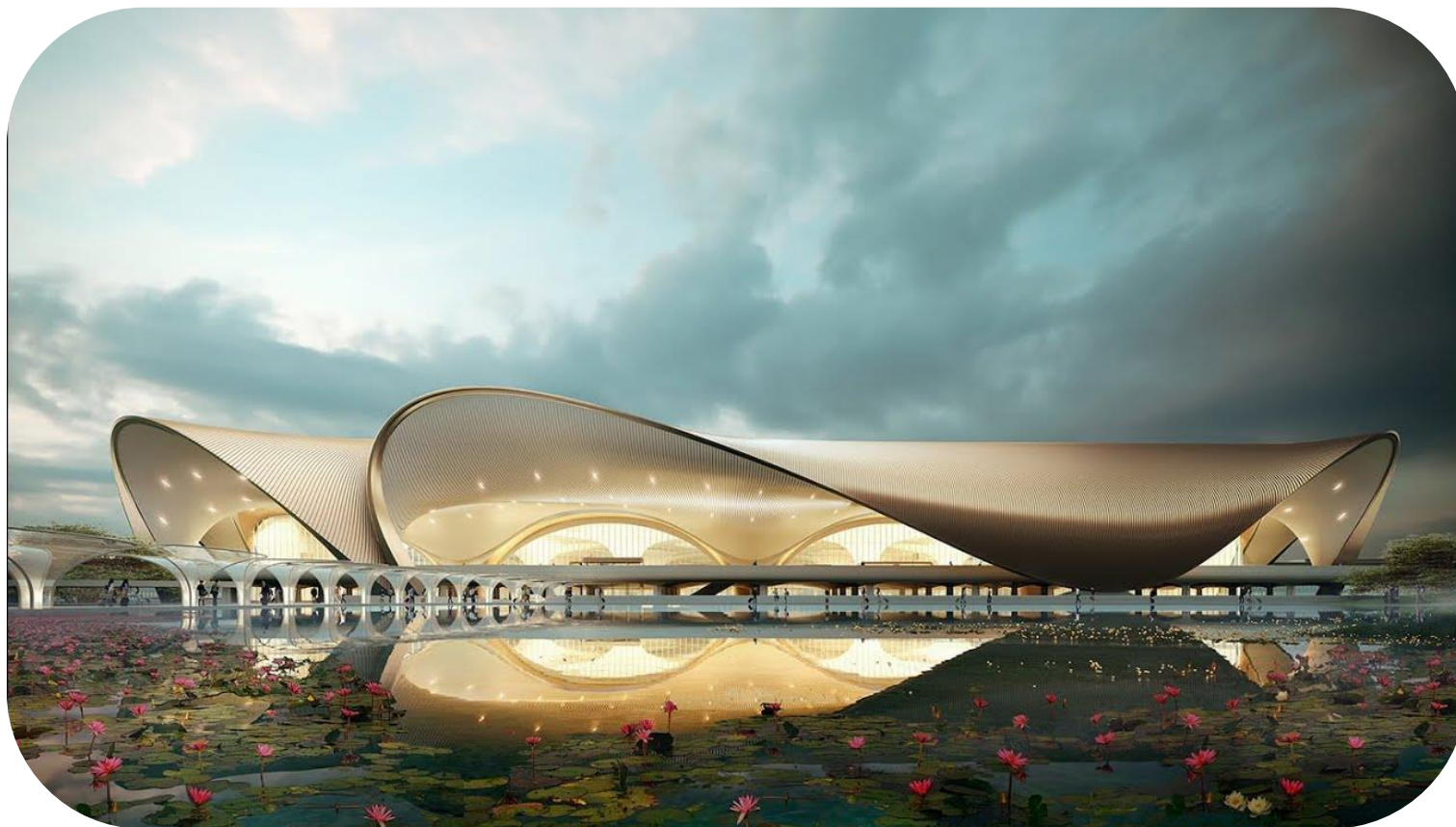


- Mumbai Airport's capacity is already saturated (rated capacity 45 mn vs 49 mn actual pax in FY 2019).
- Virtually there is no new slot available for new airline/route.
- New Airport at Navi Mumbai will ease out the congestion at Mumbai Airport.

- Dual Airport in a big city like Mumbai will help to enhance the catchment area to MMR and beyond. (MMR traffic is expected to be 116 mn in FY 2030)
- Enhanced catchment area will also lead to avenues of Hub and Spoke Model between Big Airports.

- Airports help in growing the transport network, integrated with the surrounding support areas that generate economic impact to larger communities e.g. employment generation etc.
- Airports also help to increase the adjacent industry development in nearby area.

- Dual Airport System at Mumbai and Navi Mumbai Airport will be working as 3 Terminals with 2 runways post phase-1 of Navi Mumbai Airport.
- Single Ownership of these Airports will lead to competition amongst the airlines as compared to airports with dual ownership whereby airport compete with each other.

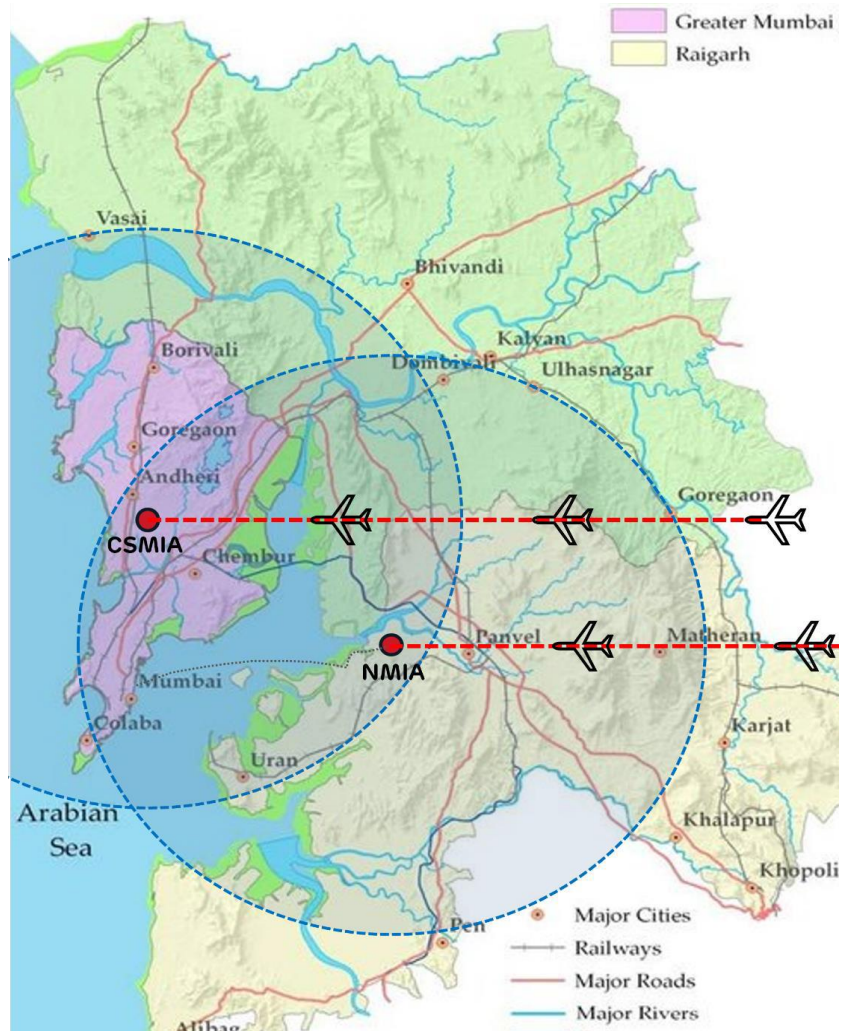


## Navi Mumbai Airport

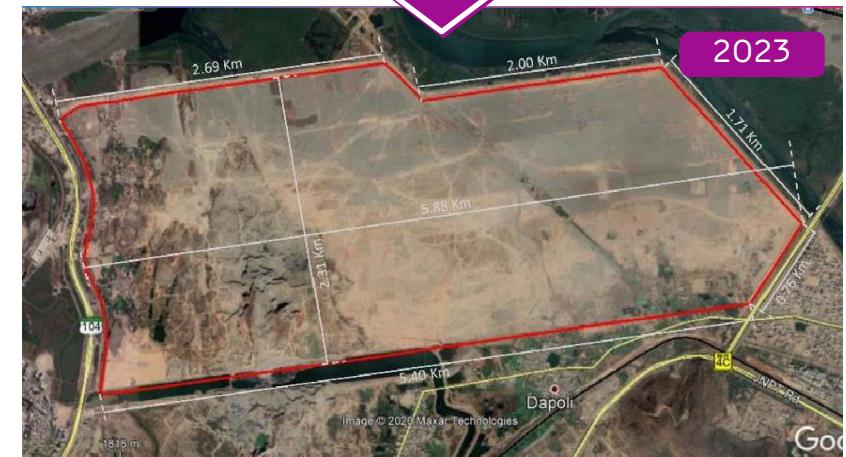
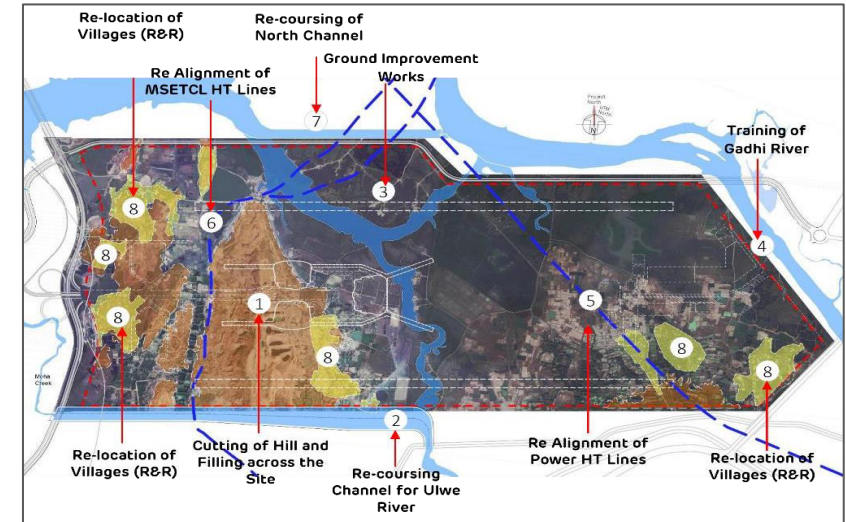
Project Details and  
Construction Status



# NMIAL : Project Site and Location



- NMIA is located in center of Mumbai Metropolitan Region (MMR) in Navi Mumbai, 35 km from Mumbai Airport (CSMIA)
- Joint Airspace Operations are being planned by AAI for Dual Airport System for Mumbai
- Airport Connectivity to Mumbai city is critical.
- MTHL, Coastal Road, other road projects , Metro Lines, Water Transport planned / being implemented for connecting NMIA to Mumbai





# NMIAL : Master Plan (Phase 1 & 2)



**Phase 1&2 Capacity:**  
 20 MPPA and 0.8 M  
 Tonnes of Cargo per annum

**Domestic Annual Passengers**  
 17.7 MPPA

**International Annual Passengers**  
 2.9 MPPA

**DOM Peak Hour Pax**  
 2556 Pax

**INT Peak Hour Pax**  
 962 Pax

**Check-In Counters**  
 60 DOM + 54 INT

**Emigration Counters**  
 28 DEP + 46 ARR

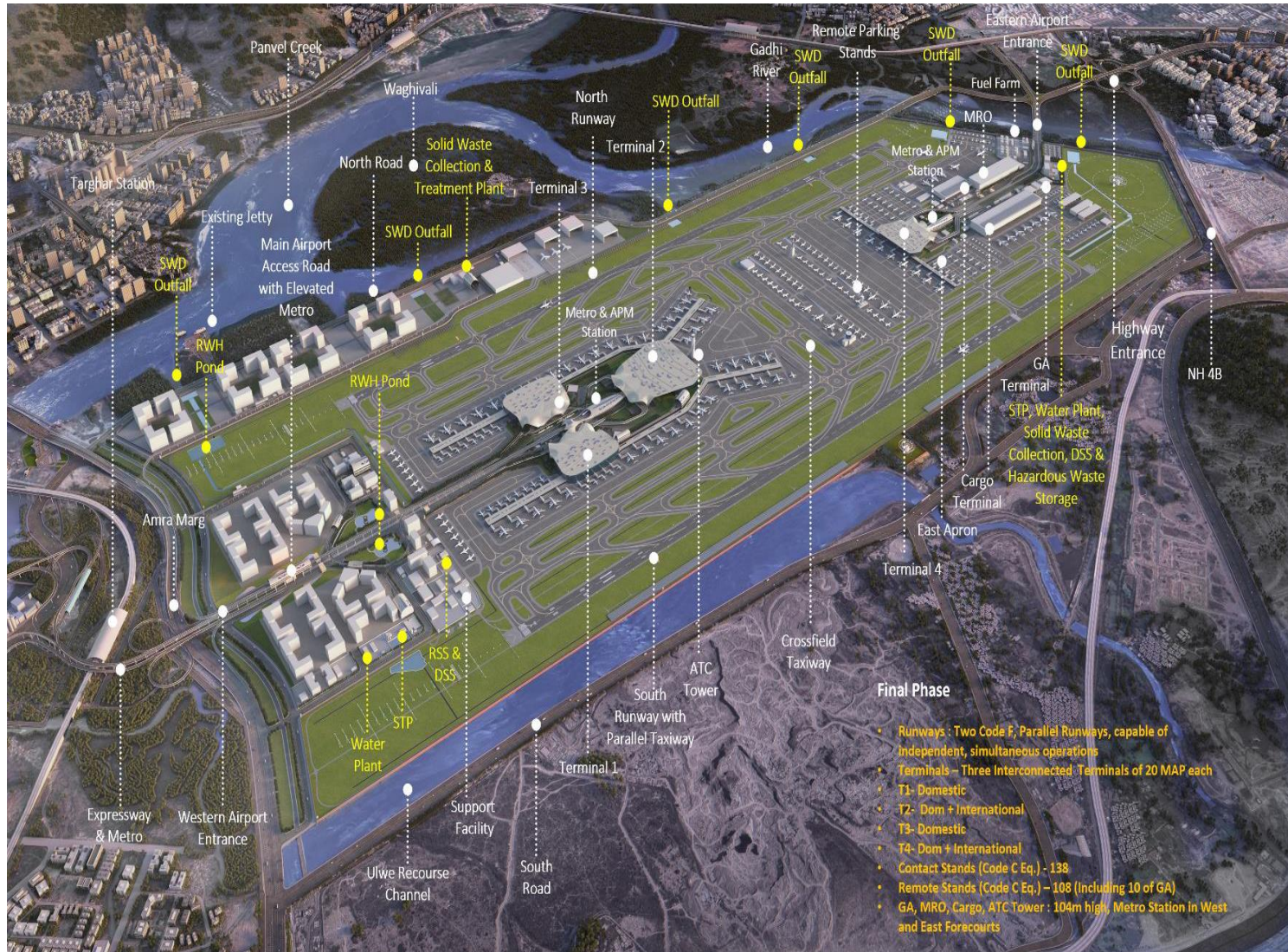
**Contact Stands**  
 29  
 (13 Code C & 8 MARS Stands)

**Remote Stands**  
 13  
 (including 1 Code F)

3700 M South Runway (600M Displacement),  
 Full Length Dual Parallel Taxiways



# NMIAL : Master Plan (Final Phase)



**Final Capacity:**  
90 MPPA and 2.5 M Tonnes of Cargo per annum

**Passenger Terminals:**  
4 Nos. (T1,T2,T3,T4)

**Runway**  
3700 M South Runway (600M Displacement), 3700 M North Runway (20M Displacement), Full Length Dual Parallel Taxiways, all Code F Compliant

**Aircraft Stands**  
256 Aircraft Stands (138 Contact & 108 Remote)

**APM System**  
introduced with 4 Airside & 8 Landside APM Stns.

**ATF Storage**  
73,000 KL

**Green Power**  
50 MW Solar Electricity Generation

**3 Metro Stations within the Airport**



# NMIAL : Key Features



India's most efficient airport with Pax capacity of 90 MPPA with 256 Code C Eq. stands & more than 2.5 MT of Cargo on limited site area of 1160 Ha

(in terms of annual pax / ha , i.e ratio of airport capacity to airport site area)

1<sup>st</sup>



4 Pax Terminals, All inter-connected on airside & landside for Hubbing Operations

Phased yet integrated Terminal Development

1<sup>st</sup>



Planned as one of the most energy efficient & environmentally sustainable airport in the world

India's 1<sup>st</sup> Airport with dedicated SAF Storage & Re- Fuelling

Dedicated ATF Supply lines to NMIA

50 MW of Solar Power Generation

1<sup>st</sup>



Passenger Terminals designed with most convenient walking distances, from check-in to boarding gates

best



India's 1<sup>st</sup> true multi-modal aviation & transportation hub providing air, road, suburban rail, metro rail, APM , High Speed Rail & waterway connectivity

Mass Public Transport as priority

1<sup>st</sup>



All Terminals inter-connected on airside & landside with 10KM long APM system to serve as an integrated aviation Hub , offering full flexibility to passengers & airlines

1<sup>st</sup>



Planned with India's largest General Aviation facility, with more 64 GA aircrafts stands

Planned with Separate Heliport Operations

1<sup>st</sup>



Digital Art Program offering vivid experience of local & regional cultural heritage

New age digital technology exhibiting heritage & culture of India & Maharashtra

best

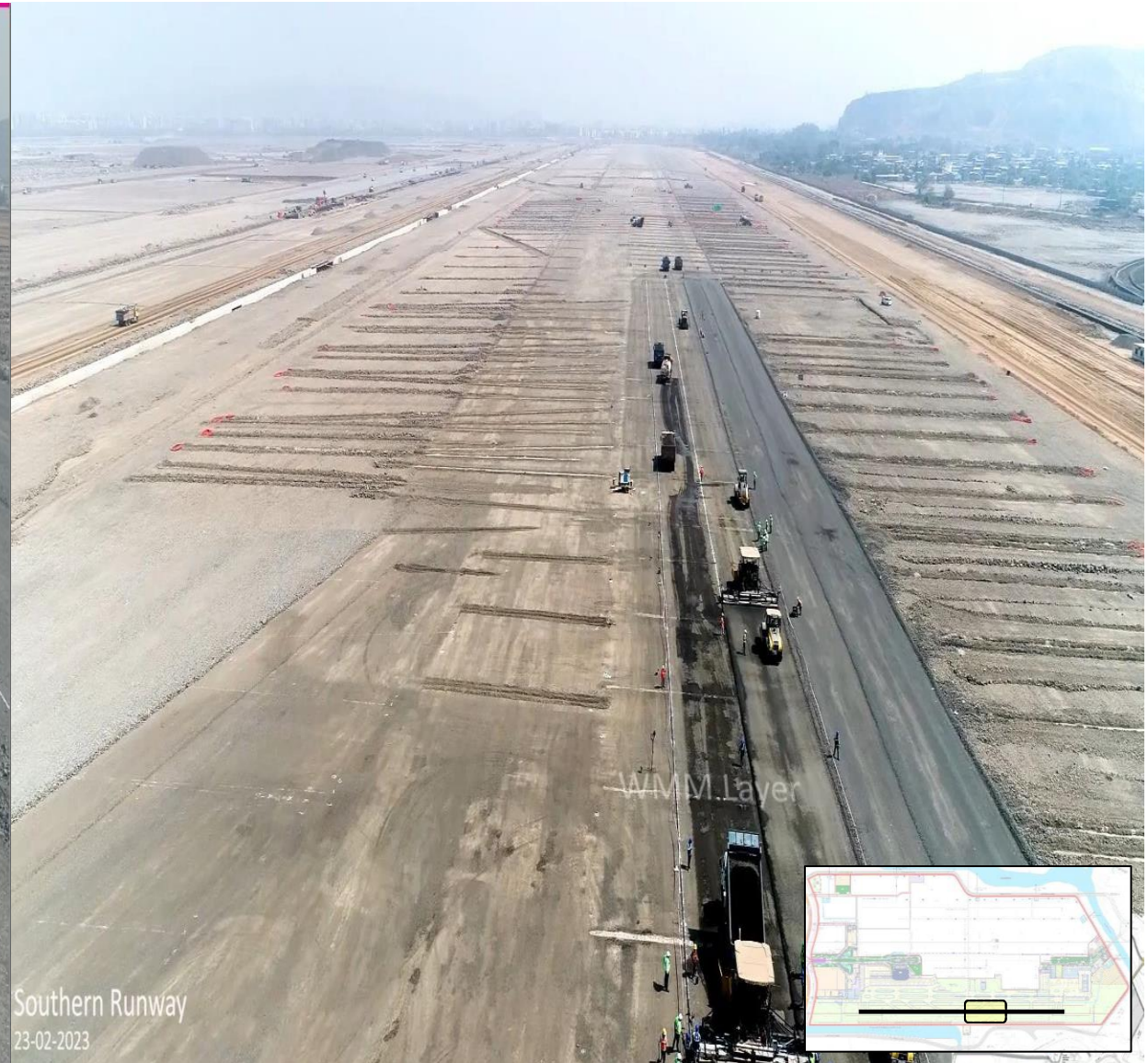


Terminal Design inspired by India's national flower : Lotus

Unique fusion of traditional Indian ambience with futuristic elegance & functionality

best

## Airside Southern Runway Sub-base Works



Southern Runway  
23-02-2023



## Airside Parallel Taxiway and Drain Work

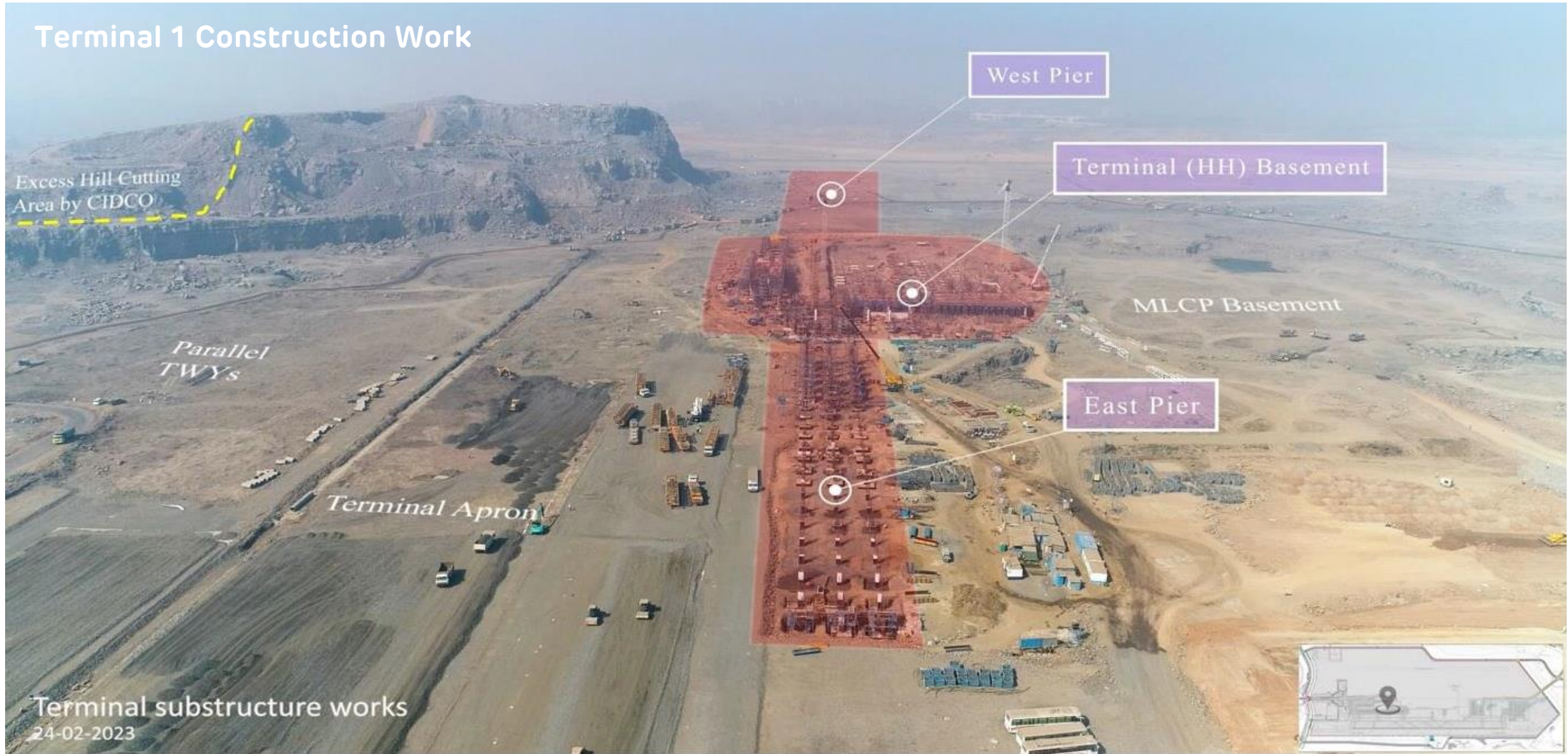


Sub-base works for Parallel Taxiways

23-02-2023



## Terminal 1 Construction Work





## Terminal 1 Construction Work





# Thank You

